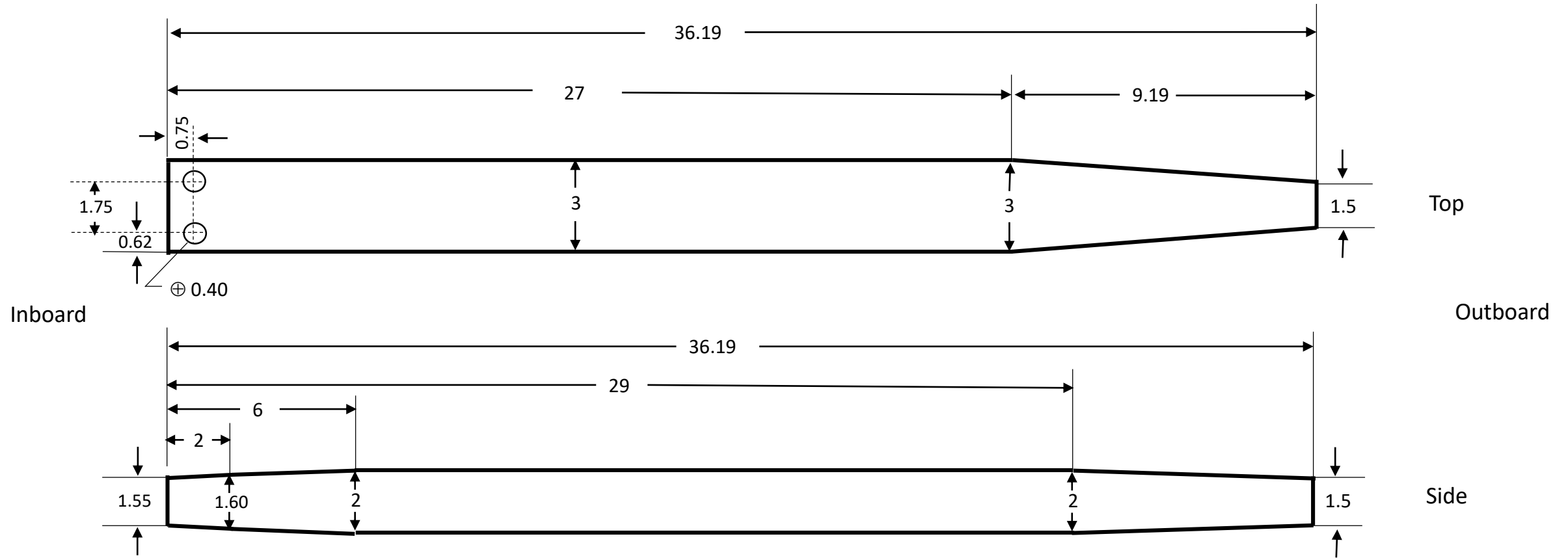
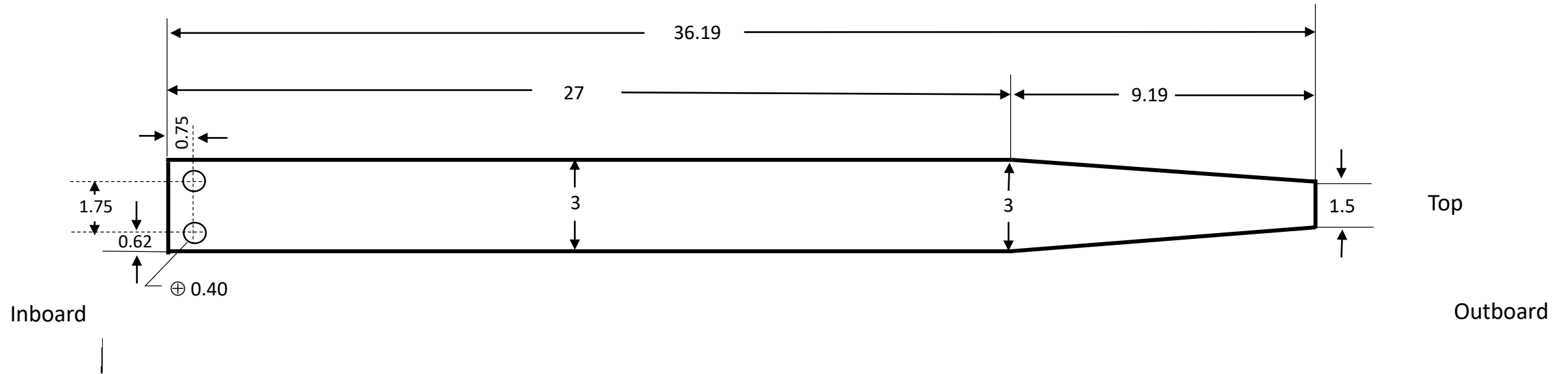


Tartan 34C Spreader (1973, #266, single lower shroud design). Top and side views.

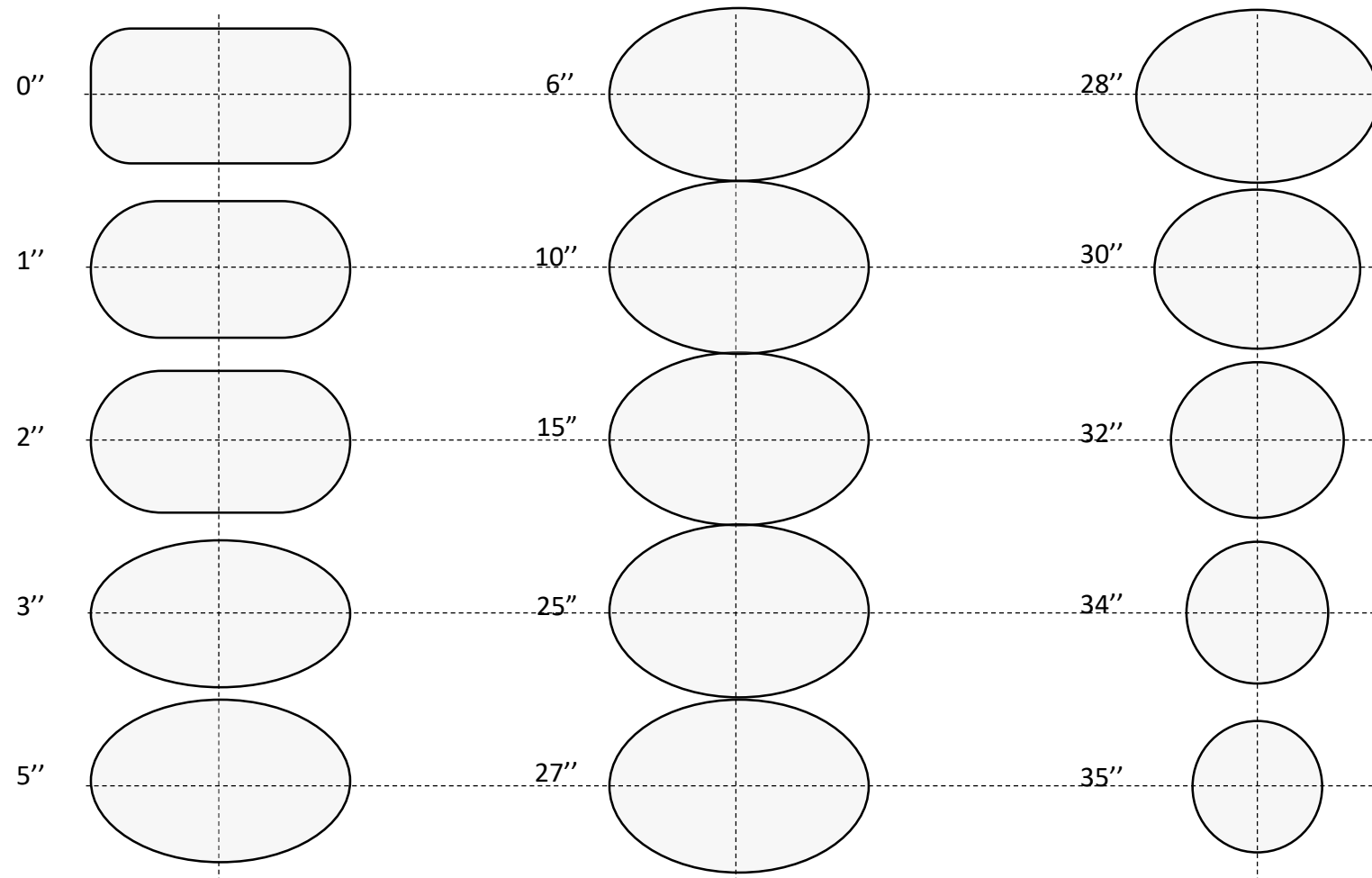


Notes: (1) Units are inches. Scale is $\frac{1}{4}'' = 1''$ (2) Cross sections appear to be symmetric and oval at stations 6"-27" from inboard edge. I was not able to measure the radius of the curves. (3) At mounting holes, interior of tube appears to be reinforced with welded aluminum plate extending about 2" into tube. Total wall thickness at that point was $\sim .22''$.

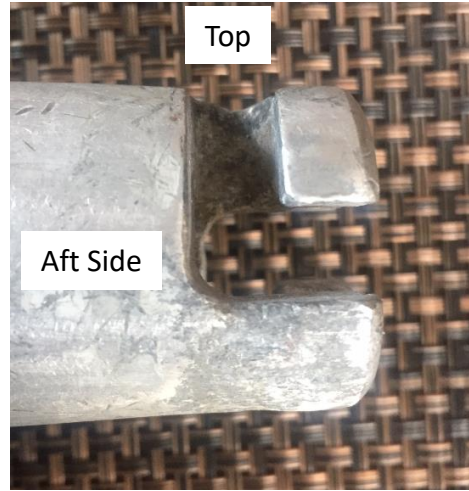
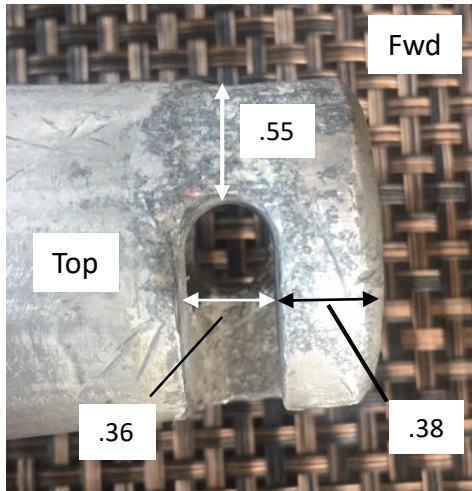
Tartan 34C Spreader (1973, #266, single lower shroud design). Top and side views.



Tartan 34C Spreader (1973, #266, single lower shroud design). Cross-section views.



Notes: (1) Units are inches. Scale is $\frac{1}{2}" = 1"$ (2) Stations are in inches from inboard edge of spreader. (3) Shape of extrusion is slightly irregular between 0"-2"; cross-sections shown here are best (symmetric) approximations.



Notes: Top row, going left to right, each image shows spreader rotated 90° clockwise, when viewed from spreader tip.

